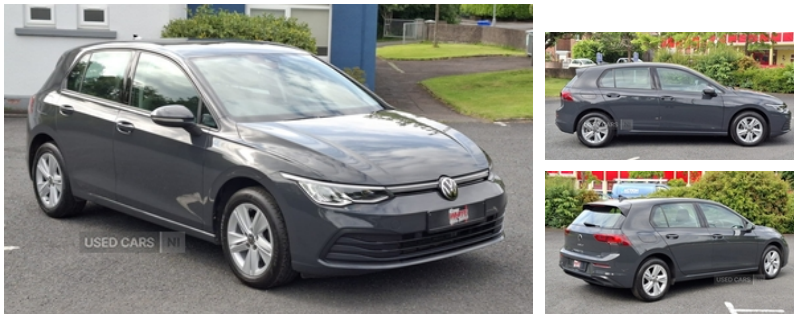




## Volkswagen Golf 1.5 TSI Life 5dr | Apr 2022

**FULL SERVICE HISTORY/ ONE OWNER /15 MONTHS WARRANTY**

**£15,695**



WE ARE HAPPY TO OFFER THIS BEAUTIFUL 2022 VW GOLF 1.5TSI LIFE  
CAR INCLUDES FULL DEALER HISTORY,  
15 MONTHS WARRANTY AND HAS MOT UNTIL MAY 2026

FOR MORE INFORMATION ABOUT THIS VEHICLE PLEASE DON'T  
HESITATE TO GIVE US A CALL.

### Vehicle Features

3 point height adj front seatbelts + pretensioners, 3 rear head restraints, 3 rear three point seatbelts, 3 seat bench in 2nd row, 10 colour interior ambient lighting, 12V socket in front centre console, 12V socket in luggage compartment, ABS, Adaptive cruise control ACC with speed limiter and front assist (reacting to vehicles, Alarm with interior protection and deactivation via infotainment system, Ambient lighting, Auto dimming rear view mirror, Automatic headlamp activation with Coming home and Leaving home feature, Automatic headlights, Body colour bumpers, Body colour door handles, Body colour door mirrors with integrated indicators, Body colour rear roof spoiler, Car2X communication, Centre console, Child locks on rear doors, Digital cockpit pro - 10.25" high resolution TFT dash display screen with customizable menus and information, Driver alert system, Driver and front passenger airbag with front passenger airbag deactivation, Drivers and front passengers safety optimised head restraints, Drivers and front passengers sun visors with vanity mirrors, Dynamic headlight range control, Dynamic road sign display, eCall - Emergency call service for SOS calls to emergency response, Electrically heated and adjustable door mirrors with memory feature, Electronic engine immobiliser, electronic odometer, Electronic parking brake with auto hold, ESC (Electronic Stability Control), Extended pedestrian protection measures, exterior illuminated styling elements at the sides, exterior temperature and fuel gauge, Front and rear

<b>Miles:</b>	50554
<b>Fuel Type:</b>	Petrol
<b>Transmission:</b>	Manual
<b>Colour:</b>	Grey
<b>Engine Size:</b>	1498
<b>Tax Band:</b>	Petrol/Diesel (£195 p/a)
<b>Body Style:</b>	Hatchback
<b>Insurance group:</b>	17E
<b>Reg:</b>	MK22PTU

### Technical Specs

<b>DIMENSIONS</b>	
<b>Length:</b>	4284mm
<b>Width:</b>	1789mm
<b>Height:</b>	1491mm
<b>Seats:</b>	5
<b>Luggage Capacity (Seats Up):</b>	381L
<b>Gross Weight:</b>	1800KG
<b>Max. Loading Weight:</b>	569KG

### PERFORMANCE & ECONOMY

<b>Fuel Consum. (Combined):</b>	52.3MPG
<b>Fuel Tank Capacity:</b>	45L
<b>Number Of Gears:</b>	6 SPEED
<b>Top Speed:</b>	133MPH
<b>Acceleration 0-100 km/h:</b>	9.2s
<b>Engine Power BHP:</b>	128.7BHP

electric windows, Front and rear passengers curtain airbag system including front side airbags, Front centre armrest with storage compartment, Front cupholders x 2, Front disc brakes, Front passenger seat, Front passenger seat lumbar adjustment, Front reading lights x 2 incorporating LED technology, Glovebox, Heated rear windscreen, Heat insulating glass windscreen, Height adjustable passenger seat, Height and reach adjustable steering wheel, High level 3rd brake light, Highway light, Isofix child seat preparation for 2 rear child seats and front passenger seat, Lane assist, LED daytime running lights, LED headlights incorporating turn signals, LED License plate illumination, Luggage compartment lighting, Maze cloth upholstery, Mobile phone interface with wireless inductive charging function, Nature cross brushed decorative inserts, pedestrians and cyclists), Petrol Particulate Filter, Power assisted speed sensitive steering, Premium USB cable in choice of either Apple or Android smartphone compatibility, Rain sensor, Rear disc brakes, Rear fog light on one side and reversing lights on both sides, Rear lights incorporating LED technology, Rear side wing doors, Rear windscreen washer and wiper with interval delay, Removable luggage compartment cover, rev counter, service interval display, Soul dashboard, Speedo, Split folding backrest with centre armrest and unsplit rear seat bench, Start/Stop function, Storm grey roof lining, trip, Two tone horn, Tyre pressure monitoring system, Warning buzzer and light for front seatbelts unfastened, Welcome light, Wireless app connect, Woven fabric storage compartments in front and rear doors, XDS electronic differential lock for improved traction and handling